

SURFACE MOUNT BOXES/ WALL PLATE MOUNTING ACCESSORIES



Fig. 1



Fig. 2



Fig. 3



Fig. 4

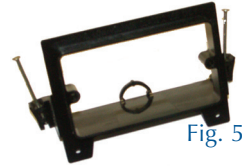


Fig. 5

Surface Mount Box

Retail Part No.	Bulk Part No.	Figure No.	Description	No. of Ports	Color
45-5612	45-5612-BU	1	Cat 5e Single Surface Box	1	White
45-5614	45-5614-BU	1	Cat 5e Single Surface Box	1	Ivory
45-1604	45-1604-BU	1	Cat 6 Single Surface Box	1	White
45-5615	45-5615-BU	2	Cat 5e Dual Surface Box	2	White
45-5616	45-5616-BU	2	Cat 5e Dual Surface Box	2	Ivory
45-1605	45-1605-BU	2	Cat 6 Dual Surface Box	2	White

Wall Plate Mounting Accessories

Retail Part No.	Bulk Part No.	Figure No.	Description
	45-270-BU	3	Wall Plate Mounting Bracket for Existing Construction, Metal
45-271	45-271-BU	4	Wall Plate Mounting Bracket for Existing Construction, Plastic
45-272	45-272-BU	5	Nail-in Low Voltage Mounting Bracket

Datacom

MODULAR PLUGS



Fig. 6



Fig. 7



Fig. 8



Fig. 9



Fig. 10



Fig. 11

Cat 5e 8-Conductor (8p8c)

Retail Part No.	Fig. No.	Description
30-9921-100	6	Round Solid, 50 Micron 100 ct Polybag
30-9921-25	6	Round Solid, 50 Micron 25 ct Polybag

Cat 6 8-Conductor (8p8c)

Retail Part No.	Fig. No.	Description
30-9923-100	7	Round Stranded, 50 Micron 100 ct Polybag
30-9923-25	7	Round Stranded, 50 Micron 25 ct Polybag

RJ-11 4-Conductor (6p4c)

Retail Part No.	Fig. No.	Description
45-5404	8	4 conductor mod. plug ends (pkg of 4)

RJ-12 6-Conductor (6p6c)

Retail Part No.	Fig. No.	Description
45-660-100	9	6 conductor modu. plug ends for round stranded cable (pkg of 100)
45-5405	10	6 conductor modu. plug ends (pkg of 4)

RJ-45 8-Conductor (8p8c)

Retail Part No.	Fig. No.	Description
45-5406	6	8 conductor modu. plug ends (pkg of 4)

RJ-50 10-Conductor (10p10c)

Retail Part No.	Fig. No.	Description
30-8910-100	11	Round Stranded, 3 Micron 100 ct Polybag



Fig. 12

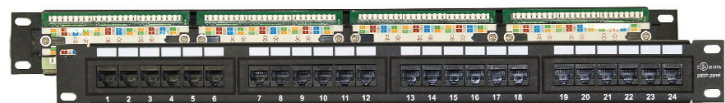


Fig. 13

Patch Panels

Retail Part No.	Figure No.	Description	No. of Ports	Color
45-1623	12	Cat 5e 110 Style	12	Black
45-1624	13	Cat 5e 110 Style	24	Black